



ACJ ASSOCIATION *for*
CONTEMPORARY
JEWELLERY

ICONS

MEMBERS' EXHIBITION 2014

Front cover image:
Dauvit Alexander: *Future Legend*
brooch for David Bowie

All catalogue photography by Ray Spence except
of work by Dauvit Alexander which was
photographed by Andrew Neilson

ISBN: 978-0-9538560-2-2

For three successive years, the Association for Contemporary Jewellery (ACJ) has built on its reputation for promoting contemporary studio jewellery through a series of exhibitions. This current programme started in 2012 with *Diamond Jubilee* (touring), followed in 2013 by STAIN-LESS – part of the Galvanize Festival in Sheffield, and now in 2014, its latest offering, ICONS.

The brief for participants was: *ICONS - jewellery for the famous and infamous, pieces reflecting cultural & design icons.*

This allowed ACJ members to reference such design icons as the Mini, anglepoise lamp or other iconic objects as inspiration, or to design a piece for a movie star, rock star or similar. It is a theme which could be interpreted in many ways, and the judging criteria stipulated that the work must be tied to the theme, and had to be wearable in some capacity.

The judging panel comprised; renowned maker, Jane Adam, Gallery Director Kath Libbert & Laura Mabbutt from the National Centre for Craft & Design (NCCD), Sleaford, the venue for the exhibition. It was chaired by myself, and I would personally like to thank our judges for their knowledge, insight, time and enthusiasm for the task. I would also add that, with almost no exception, all decisions made by the judging panel were unanimous.

We hope you enjoy the diversity, the humour, and the skilful use of materials, set against iconic imagery.

Professor Jack Cunningham

*Head of the School of Jewellery
Birmingham City University*



Dauvit Alexander

Fashion: Victim - In Memoriam Alexander McQueen

Found, burnt and corroded iron spheres; found corroded iron strip; sterling & fine silver; porcelain; black spinels; pyrope, mali, tsavorite, speassarite and rhodolite garnets; zircons; pink spinels; black onyx; carnelian; coral; prehnite

Alexander McQueen would not have seen himself as an Icon but the rest of the world did. This piece explores his life - his love of falconry - and his death, to create a piece which would not have been out of place in one of his catwalk shows.

Lynne Bartlett

Disappearing Icon?

Titanium sheet, with titanium and silver wire

Battersea Power Station has been celebrated in painting and photography. Current redevelopment plans involve the removal, for rebuilding, of each chimney. Some doubt that once the chimneys are demolished they will be rebuilt but whatever the outcome, the stark silhouette of the splendid 1930s design will never look the same again.

www.reflectionandrefraction.co.uk





Jessica Briggs

Angel Triptych

Sterling silver, 23.5ct gold, oxide, steel pin on brooch

My design source is the iconography of Holy Russia, the Angel Gabriel in particular. Whilst I have no belief in a God, the idea of a talismanic Angel does appeal!

The partial, faithful image is spread over 3 pieces: my interpretation of a triptych. Upon wearing, the image becomes abstracted, keeping its power secret.

jessicabriggs@btinternet.com

Elizabeth Jane Campbell

Strangers #1, #2 & #3

Precious white metal, ceramic, vitreous enamel, ink, wood, steel pin

My icon is Louise Bourgeois - a sculptress and artist who revolutionised the modern art world with her strongly autobiographical work which explores ideas of gender and balance.

Bourgeois' cross-disciplinary approach and freedom of materials is extremely inspiring, and it has led me to explore shape, material and colour within a new series of jewellery, as I created a set of three brooches in response to her *One and Others* sculpture.

www.elizabethjcampbell.co.uk





Hannah David

Reflections of the Shard

Silver, lemon quartz

My work explores flow and pattern. This piece responds to the reflections, repeated elements, acuity and sparkle of the Shard.

The faceted light from the stone makes reference to the sun seen through the mirror of the building opposite.

hannahdavid@david4.plus.com

Lotus de Wit

Water filter brooch

Precious white metal, water filter

Sir David Attenborough was recently named Britain's greatest living icon by BBC 2's Culture Show. His documentaries are an endless source of inspiration for my work.

I have designed something that would be practical when stuck in a jungle because I can't imagine Sir David wearing jewellery just for the sake of it.

The piece is a holder for a water filter (available from camping shops, they enable you to drink water safely in the wild). It is shaped as an insect so it doesn't look out of place in any documentary he may be filming.

www.lotusdewitjewellery.com





Michelle Fernandez

Large Multi-ribbed Pendant

Silver, polypropylene and resin

The 1939 Delahaye Type 165 Roadster, a French Classic car, embodies the glamour of the Art Deco period. It achieves a balance between form, pattern and colour. It is uncompromising in its sculptural qualities and bold use of colour; sinuous, streamlined bodywork is accentuated by the use of thin chrome lines.

I aim to capture these qualities through the use of hand-polished curvilinear forms, offset by silver lines and planes of bold coloured resin.

www.michellefernandez.co.uk

Gill Forsbrook

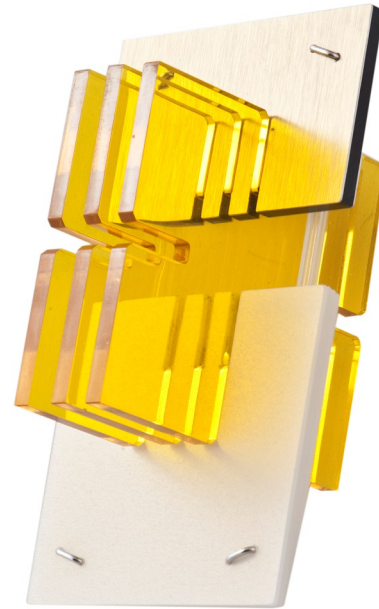
Yellow, Red & Blue Icons

*Playplax, polypropylene, aluminium, silver,
MDF, Formica, copper, nylon thread, stainless
steel chain, silicone tubing*

My icon is PlayPlax, a beautifully simple, open-ended construction toy designed by Patrick Rylands in 1966. The inspiration of artists and designers, it is now held in the permanent collection of the V&A Museum of Childhood.

The PlayPlax squares themselves are the main components of my pieces. Playplax stands out in my childhood memories for its beauty, colour and optical properties and it is this that I wish to celebrate in my pendants.

gillforsbrook@live.com



Irmgard Frauscher

Intersect

Sterling silver, gold plate



The *Intersect* hand piece is inspired by Mies van der Rohe's *Barcelona* chair. The design celebrates the chair's simple lines and its iconic intersection.

The hand piece is designed to be worn across the hand to create a real statement on the front and back of the hand.

www.irmgardfrauscher.com

Annette Gerritse

Phantasy ring

Sterling silver, PVC

Chopsticks bangle

*Sterling silver, acrylic, freshwater pearls,
nylon wire*

The icon I have chosen to connect my two pieces with is Elton John, singer-pianist-songwriter. My pieces relate to him because they are colourful, theatrical, humorous and bring a smile to your face. They also show elements of surprise and provoke questions as does my icon in his performances and life.

annetjl@bigpond.com





Joanne Haywood

Woolgathering - a neckpiece for Patti Smith

*Hand felted surface, Italian silks, silver, gold,
English paper pieced patchwork, faceted
blood (stones)*

An imagined visual interpretation of the
book 'Woolgathering' by Patti Smith.

*'There it lies on the ground before us, a drop of
faceted blood, more real than a ghost,
glowing. If we stir it may disappear.'*

*'Gathering what needs to be gathered. the
discarded. The adored. Bits of human spirit
that somehow got away. Caught up in an
apron. Plucked by a gloved hand. From all this
the cloud is formed.'*

www.joannehaywood.co.uk

Jodie Hook

Folded Cuff

Sterling silver, satin ribbon

Dame Vivienne Westwood is my icon. I have always been inspired by her fashion design and her passion for life.

My piece reflects her use of fabric, manipulating it to fit around the body. Her style is unique, her trademark orange hair inspired the ribbon running through my piece, holding together the folds of delicate silver around the wrist.





Terry Hunt

*In Memoriam: Norwegian Blue
Purchased 1969; died
somewhat earlier*

*Oxidised mixed metals, parrot feather, gold
leaf, ribbon*

Monty Python and their work are iconic within the genre of original British humour.

One of their most well-known sketches is that of the 'Dead Parrot.' The eponymous bird - a Norwegian Blue - deserves to be an icon in its own right.

Ulli Kaiser

'The beginning is always today'

*Sterling silver, onyx, vintage and new glass
beads, lava sand, bone, hair, paper, lace,
pearls, Victorian porcelain doll*

Mary Shelley (1797-1851), well-educated, full of feminist ideas, created *Frankenstein* during a miserable summer, due to a volcanic eruption.

She was, like her monster, an outsider to a society of prejudices and rules. Both were no strangers to sadness and death; by the age of 24, Mary had lost 3 children, family members to fatal illnesses and her husband at sea.

The monster murdered. Her refuge was her writing.

www.ullikaiser.co.uk





Emily Kidson

Vivienne Earrings, Necklace & Brooch

Fabric, embroidery thread, acrylic, laminate, oxidised silver, steel, wood, permanent marker ink, nail varnish

Vivienne Westwood: fashion icon

From Westwood's unforgettable orange hair reflected in the choice of colour, to her legendary use of the safety pin referenced in the shape of the laminate and acrylic, these statement jewellery pieces are a bold and quirky testament to an iconic fashion designer.

www.emilykidson.com

Jane Moore

Bad Weather

Silver and vitreous enamel

My 3 brooches represent icons of bad British weather: *Every cloud has a silver lining*; *Head in the clouds* and *It never rains but it pours*.

For the wearer they are but symbols that could represent their current state of mind but it is for the viewer to ask the questions could it be an image, picture, or representation? Is it a sign or likeness that stands for an object by significance or does it represent an analogy?



Mandy Nash

Paper Chain

Newspaper



My piece encompasses many icons - a paper chain (childhood Christmas memories) made from newspaper (becoming rarer with changing communication media) and echoes an Elizabethan ruff (hinting at two powerful female icons, Elizabeth I and II).

The design, originally inspired by a church window in Riga, Latvia, coincidentally is also the pattern enveloping the new Birmingham library (a new icon).

The links connect - I spent many hours in the old Birmingham library whilst a student.

Helen Noakes

Sole Voyager

Epoxy resin, silver, plastic model

To me the Polar Bear is the reluctant icon of the Arctic Realm and an indicator of changes taking place there and globally.

An icon brought into sharp focus by their potential demise and reflected by my literal take, in resin and silver, of melting ice-caps and solitary bears.



Poppy Porter

Icons of Formula 1

Auto-Air colours, plastic, resin, titanium, sterling silver

Formula 1 drivers adopt a personal design for their helmet so that they can be recognised on the race track. The more successful the driver the more iconic the helmet design becomes.

My Icons of F1 are: Damon & Graham Hill, Stirling Moss, Niki Lauda, Nigel Mansell, Ayrton Senna, Sebastian Vettel, Michael Schumacher, Alain Prost, Fernando Alonso, Juan Manuel Fangio, Lewis Hamilton and Gilles Villeneuve.



Tamizan Savill

Anglepoise

Silver, LED, wiring, magnets

George Carwardine's Anglepoise lamp was developed in the 1930s; a beautiful piece of practical engineering.

This small working model sits on the shoulder, attached by magnets.





Elizabeth Shaw

Caged Arm

*Found plastic arm, recycled and reused
sterling silver*

Diver

*Found terracotta body, recycled and reused
sterling silver*

Repaired Arm

*Found porcelain arm, recycled and reused
sterling silver*

It strikes me that the structures I create to make sense of found broken limbs and other discarded objects, are similar to the structures that religions use to contain reliquaries - body parts of saints - which, in turn, take on an iconic role.

www.elizabethshaw.com.au

Eleanor Symms

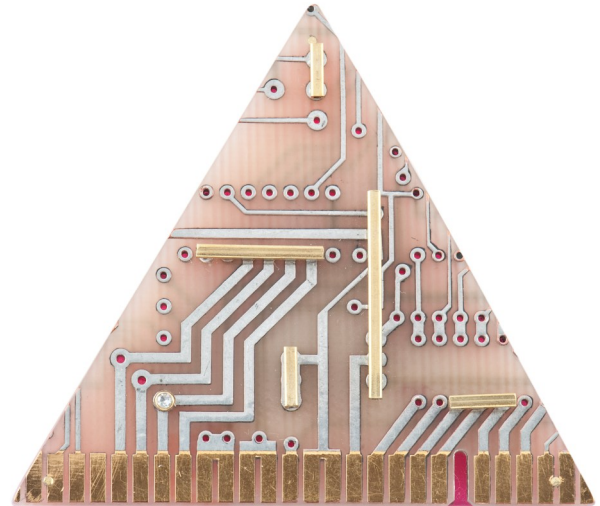
Enigma: a brooch for Alan Turing

*Reclaimed acrylic sheet and circuit board,
white sapphire, brass and stainless steel pin*

This piece was designed in honour and appreciation of Alan Turing, extraordinary mathematician, WW2 code breaker and pioneer of computing.

The materials used reflect his achievements in computing, and the form of the pink triangle references the stigmatisation and persecution of homosexuals in Nazi Germany.

Despite his very significant contribution to the Allied war effort, Turing was criminalised and persecuted in his own country due to his sexuality.



eleanorsymms@tiscali.co.uk



Su Trindle

Red Carpet Rings

Sterling silver, polyester resin, pigment

Sculptural rings aiming to capture the dynamic sweep and dramatic potential of the red carpet the moment before the glitterati arrive.

Designed to be worn by a starlet, to enhance a gesture and to catch the eye.

They are also freestanding and on pedestals, like miniature awards.

Aoife White

Dragon Cuff

Sterling silver, 18ct gold, citrine

My chosen icon is Daenerys Targaryen (Emilia Clarke) the Mother of Dragons from *Game of Thrones*.

Game of Thrones is itself iconic of the here and now and Daenerys Targaryen is a wonderful icon for women; strong, powerful and compassionate. She is a leader to be respected, feared and loved.

I am highly influenced by Celtic motifs, in particular the dragon symbolising strength and power.





Anthony Wong

'Hear my Words' neckpiece

Sterling silver, recycled 22ct gold, moonstone

'A Pool of Wisdom' ring

Sterling silver, recycled 22ct gold, amethyst

The ethereal, beautiful, green-eyed Tilda Swinton has inspired these pieces. Cool, mysterious moonstone and amethyst reflect her strong, brave and wise character.

An active heart against injustice, the *Pool of Wisdom* ring is a portal to understanding and clarity; *Hear my Words* is reminiscent of an implement to capture and release words of solidarity, empathy and passion.

www.anthonywongjewellery.co.uk



Promoting the artform, supporting the makers, developing the audience in the UK and abroad

with help from our corporate members:

benchpeg®



ASSAY OFFICE

TheBench.com



EDINBURGH ASSAY OFFICE



Holts
ACADEMY
SUCCESS IS A JOURNEY



ICONS

17 May - 27 July 2014

**The National Centre for Craft & Design
Sleaford, Lincolnshire, NG34 7TW**

ISBN: 978-0-9538560-2-2



Supported by
**ARTS COUNCIL
ENGLAND**