



MEMBERS' EXHIBITION 2015

- Sleight of Hand logo designed by Ian Scaife
- Catalogue photography by **PROGRESSION**  
PROGRESSIVE IMAGING  
except Elizabeth Shaw's piece  
which was photographed by Michelle Bowden
- Catalogue designed and produced by Terry Hunt  
and printed by Tuckey Print, Birmingham

There is no illusion that the Association for Contemporary Jewellery (ACJ) is staging their fourth successive exhibition but the theme for this year will provide the viewer with many questions. *Sleight of Hand* conjured up some intriguing responses and should delight the audience with the magical interpretations of its title.

Following the previous exhibitions, *Diamond Jubilee* in 2012, *STAIN-LESS* in 2013 and last year's *ICONS*, *Sleight of Hand* will be seen at three venues starting at The Brewhouse, Burton upon Trent, moving up to The Scottish Gallery and back down the country to Plymouth College of Art.

It was a pleasure to chair the panel of distinguished judges comprising Lesley Craze MBE, Professor Dorothy Hogg MBE and Johnny Rocket. Our selection was made through lively debate, drawing on considerable experience and enjoying the spirit of the imaginative content. The exhibits include material trickery, optical illusion, and humour, to contrast with the serious deception of the con-man.

We hope you will enjoy the surprises, the play on words and the sheer skill of the ACJ members representing all corners of the UK and from as far afield as Australia.

Gaynor Andrews

*Head of the School of Jewellery  
Birmingham City University*

## Dauvit Alexander

### *Pulling Rabbits out of a Hat Watch, chain & fob*

*9ct gold, silver, iron, brass,  
copper, found watch-case,  
watch movement, gemstones,  
mixed media*

Using his own Sleight of Hand, Dauvit has converted a vintage watch-case (which was sold for scrap) into a working pocket-watch and chain fit for the most exacting of magicians, while playfully referencing the clichés of the conjurer's art.

[www.justifiedsinner.com](http://www.justifiedsinner.com)





Lynne Bartlett

*Shell Game*  
*Cuff, Brooch, Pendant*

*Titanium, (base metal pin for  
brooch, wire for pendant)*

Based on the Shell game, an old con-trick that relies on sleight of hand, the anodised and machine engraved titanium pieces give the illusion of the three shells.

[www.lynnbartlettoriginals.co.uk](http://www.lynnbartlettoriginals.co.uk)

Jessica Briggs

*Fold neckpiece*

*Fold drop earrings*

*Fold bangle*

*Silver, 23.5ct gold, oxide*

The eye is deceived by these pieces, seeing them to be more complex in form than they are. the effect of a simple fold is multiplied by the selective placement of gold and the partial removal of oxide.

*jessicabriggs@btinternet.com*



Elizabeth Campbell

*Smoke and Mirrors #1*  
*Smoke and Mirrors #2*  
*(un)Glamorous Assistant*  
3 brooches

*Silver, copper, vitreous enamel,  
wood ash, hematite [1 and 2]  
digital enamel decal, gold foil [3]*

Elizabeth has responded to the smoke & mirrors aspect of the theme by introducing some new elements and techniques to her enamelling; adding ash to the surface for colour and texture, and a light-hearted reference to modern life with a 'selfie' made with a digital enamel decal.

[www.elizabethjcampbell.co.uk](http://www.elizabethjcampbell.co.uk)



Dani Crompton

*Spiral  
Bangle*

*Wood, newspaper*

A statement bangle representing transformation: achieved through the metamorphosis of everyday materials and objects into a form derived from never ending perspective drawings.

Designed to trick the eye - can you catch the elusive ball?

[www.dani-c.co.uk](http://www.dani-c.co.uk)







Caroline Finlay

*Sealife Series*  
*Box / neckpiece*

*Sterling silver, vitreous enamel*

Deception, surprise! All is not as it appears!

Inspired by the shoreline, like a sea plant or creature, the box has a hidden element, a surprise within, a symbiotic relationship with its inhabitant. The oxidised chain inside can be threaded through the lid to create a neckpiece and then replaced in the box when not being worn.

[www.carolinefinlay.co.uk](http://www.carolinefinlay.co.uk)

Shelby Fitzpatrick

*Sleightly Laundered  
Neckpiece*

*Perspex*

A flowing trail of assumed Beauty and Hope is manipulated and subverted into a whitewashed Reality, carefully guarding twisted motives and secret deceptions. Money as a demotic currency is channelled through sleights of hand into circuits of capital, empowering the few. Sleights of hand also render seemingly respectable outflows from these circuits into illicit areas, including the use of banks for money-laundering, tax evasion and sinister criminal activity.

*shelby.fitzpatrick@clickvision.co.uk*





Gill Forsbrook

*Brutalist  
Raw Concrete  
Southbank  
3 bangles*

*Polypropylene, silver  
Photograph on aluminium with mdf*

Gill's work for this exhibition plays with the perception of scale. With sleight of hand her bangles appear not as jewels but as buildings

[www.axisweb.org/p/gillforsbrook](http://www.axisweb.org/p/gillforsbrook)

Annette Gerritse

*Hand-Sandwich-Card Trick  
Brooch*

*Argentium & sterling silver,  
monel metal, canvas*

In this trick, the player picks a card and gives it to the magician, who places it between the player's hands. With a flourish the magician then holds up the chosen card while the player is left with another. Taking part in this trick both confused and fascinated Annette, which inspired this brooch

*[annetj@bigpond.com](mailto:annetj@bigpond.com)*





Masako Hamaguchi

*Hey Presto 1, 2 and 3*  
3 pendants

*Airplane ply, silk, 18ct yellow  
gold*



Slotting the two flat elements together transforms a pair of pendants into a single voluminous form. the change is dramatic. And just as easily, converts back to being flat.

The necklace can be worn either way, ready to amuse you, the observer.

*hamaguchi.masako@gmail.com*

Susi Hines

*Revolving Armillary #1*

*Revolving Armillary #2*

*Mutabilis*

*3 rings*

*18ct gold, silver, diamonds.*

*Including etched alchemical images  
and engraved Greek text*

More than meets the eye.

Susi is intrigued by spherical forms,  
intricate movement, and contrast  
between the exterior and interior.

These pieces move to reveal  
different views, or, as in the Mutabilis  
ring, can be taken apart and worn in  
a new way.

[www.susihines.com](http://www.susihines.com)



Polly Horwich

*Find the Lady*  
*Cuff bracelet*

*Iron wire, plastic, playing card*



The shiny coin retrieved from behind an ear ... a playing card slipping from the hustler's sleeve ... Polly is intrigued by the idea of precious items that are hidden or revealed by deft manipulation.

This cuff bracelet encloses a 'coin' that rolls round the wrist, becoming visible only with a certain position of the hand. Polly has chosen the transformational diva Madonna as the face of the queen on the coin.

[www.pollyhorwich.com](http://www.pollyhorwich.com)

Terry Hunt

*Ceci n'est pas une .....*

*3 brooches*

*Acrylic, mixed media*

When, in 1929, René Magritte wrote under his painting of a pipe:

*Ceci n'est pas une pipe*, he was questioning the concepts of definition and representation.

Each of the three dimensional forms used in these brooches are more 'realistic' than a two-dimensional painted version but are still not the 'real thing'

*t.hunt28@btinternet.com*





Stephanie Johnson

*Riffle*

*Brooch, pendant, earrings*

*Silver, 18ct. gold*



Stephanie has taken inspiration from watching card tricks, seeing cards shuffled and special cards revealed.

[www.stephaniejohnsonjewellery.com](http://www.stephaniejohnsonjewellery.com)

Emily Kidson

*Political spin: wealth*

*Political spin: housing*

*Political spin: healthcare*

*3 brooches*

*Laminate, walnut, silver,  
yellow precious metal*

These brooches explore political sleight of hand. In politics the subject matter, for example housing, wealth, healthcare or education, is often presented in black and white terms, when in fact it is many shades of grey. Issues are given a political spin, which distracts from larger, complex situations and hidden agendas

[www.emilykidson.com](http://www.emilykidson.com)





Marion Leboutteiller

*En attendant le Printemps*  
Brooch

*Oxidised sterling silver,  
mother of pearl, felt, steel wire*

The viewer experiences trickery when handling the piece; the felt ball moves freely inside a delicate habitat while the shadows play on the back, reflecting the hidden soul of the piece that one can only see when the brooch is taken off.

[www.marion-leboutteiller.com](http://www.marion-leboutteiller.com)

Sarah Macrae

***Instant Blooming Ring***

*Silver, polypropylene, blue  
topaz*

Inspired by a traditional conjuring trick, the Instant Blooming Ring has a bud on one side and the ring swivels to show an open bloom on the other. With the accompanying silk handkerchief and some practiced sleight of hand, the ring appears to bloom instantly.

[sarahmacraejewellery.co.uk](http://sarahmacraejewellery.co.uk)





Jane Moore

*Mirror Piece*  
*Pendant*

*Silver, vitreous enamel*

Now you see it ...

Lift the knob on this pendant piece to reveal a secret mirror and your own reflection.

The viewer unexpectedly becomes part of the deception.

[www.janemoore.co.uk](http://www.janemoore.co.uk)

Viktoria Müntzker

*Crushable*

*Lacerable*

*2 brooches*

*Porcelain, wood plus  
brass, tiger eye [1]  
alpaca, pearl [2]*

Frail souls and thoughts lead us to something white and strong. Burned in the heat of flame and transformed into someone else. Dripping and casting and floating porcelain. Viktoria has transformed lace by dipping it into liquid porcelain, fired in the kiln at 1300°C. At the end you see lace, but there is no lace any more.

[www.viktoriamuenzker.eu](http://www.viktoriamuenzker.eu)





Kirsty Pearson

*Glitz and Misdirection*  
*Neckpiece*

*Mirrored glass, silk thread,  
white metal wire*

The concept for the piece began with smoke and mirrors, and how a magician misdirects the viewer. Inspired by the glitz and glam of a magician's performance, the piece may create a performance in itself. Using mirrored glass resulted in a certain weight to be added to the piece. When worn it hangs, sculpting and moving with the body, creating the misdirection.

[www.kirstypearsonjewellery.com](http://www.kirstypearsonjewellery.com)

Elizabeth Shaw

*Bird of Prey*  
Ring

*Recycled & reused sterling  
silver, glass*

*Bird of Prey* features an obvious mechanism. It has a button inviting a viewer to physically interact with it. Pushing the spring-loaded button affords limited movement to the reconstructed bird. It focuses attention away from the activity of the wearer's other hand.

[www.elizabethshaw.com.au](http://www.elizabethshaw.com.au)





Su Trindle

*Abstraction Distraction*  
*Brooch*

*Titanium, neon acrylic, sterling  
silver, fine silver leaf, enamel  
paint*



The spiral is an ancient symbol used by magicians and jewellers alike to charm, beguile and mesmerise an audience. This brooch is a playful interpretation of the seductive craft of hypnotism used by performing artists to distract an audience from their sleight of hand.

[www.quercusilver.co.uk](http://www.quercussilver.co.uk)

Nicola Turnbull

***Disappearing Diamonds  
Magic Chameleon  
2 rings***

*Sterling silver, stainless steel  
plus diamonds [1]  
and orange sapphires, amethyst [2]*

The theme of magic inspired a new take on Nicola's articulating concentric ring designs. She has made two rings which, with the wearer's sleight of hand, can be quickly spun round to change appearance. The *Disappearing Diamonds* ring turns, revealing its secret diamonds and the *Magic Chameleon* ring can be transformed from purple amethysts into orange sapphires.

[www.nicolaturnbull.co.uk](http://www.nicolaturnbull.co.uk)





Susan Wainwright

*Conjuring Trick  
Pendant*

*Sterling silver, gold foil,  
9ct gold chain, crystal beads*

The pendant is a conjuring trick, a top hat with a wand resting across the brim. The hat flips up, rotating on the wand and clicks into place brim down.

As it rotates three blue birds 'fly' out of the hat.

[www.suewainwrightsilver.co.uk](http://www.suewainwrightsilver.co.uk)

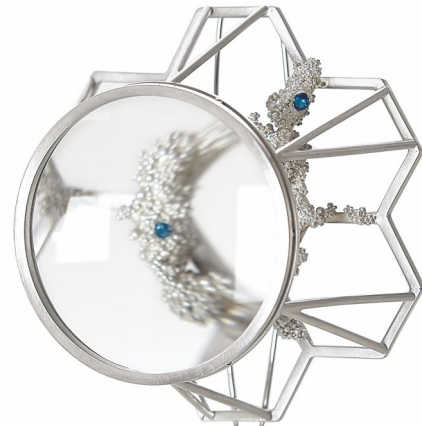
Karen Westland

*Molecular Cloud*  
*Brooch*

*Sterling silver, sapphires,  
magnifying lens, stainless  
steel pin*

Karen is inspired by 'tools' built in order to explore outer space and how the invisible is revealed through these tools. The relationship we have with the universe, questions of time and our existence are also underlying subjects of her work. This brooch highlights our desire to uncover and understand, eliminating mystery and illusions.

[www.karenwestland.com](http://www.karenwestland.com)





Maria Whetman

*Material Landscape Cluster*

*Brooch*

*Mine of Mines*

*Necklace collar*

*Pure tin, copper, iron, mica, chalk,  
resin [plus silver in collar]*

At first glance clusters of 'jewels' and shards of silver appear to be just that. The deception is that they are not high value gems mined of the earth, but 'made' jewels informed by a local, undulating, scarred mining landscape of tin, copper, arsenic, silver; the ingredients of the Industrial Revolution. Processes once applied to this landscape - previously the largest copper arsenic mine in the world - have been translated within each 'Jewel'.

[www.fluxplay.co.uk](http://www.fluxplay.co.uk)

Anthony Wong

*Spoon Jar, Jar Jar, Spoon*

Neckpiece

**Fez Bracelet**

Neckpiece: sterling silver, copper,  
glass, fishing line

Bracelet: sterling silver, paper, hair,  
thread

Tommy Cooper was the inspiration for these pieces. This interpretation of *Sleight of Hand* encapsulates Cooper's use of magic to disarm and entertain - deception and trickery at its most benign. The pieces are literal: colour, form and texture are inspired by his stage props, 'just like that'!

[www.anthonywongjewellery.co.uk](http://www.anthonywongjewellery.co.uk)





Trish Woods

*Smoke and Mirrors  
Collar*

*Pewter, acrylic, hematite,  
silver beads*

Now you see it, now you don't!  
Inspired by magic and illusion,  
patterns of smoke trails and mirror  
images. reflections of the wearer  
and their environment shift and alter  
with movements of the body and  
atmosphere which, in turn, overlays,  
distorts and hides the patterns on the  
collar to create a visually intriguing  
and magical display of light and  
form, ever changing.

[www.trishwoodsdesignmetals.com](http://www.trishwoodsdesignmetals.com)

Anastasia Young

*Measuring Device, function  
unknown  
2 rings*

*Sterling silver, 24ct & 18ct  
gold, garnet*



Inventory Numbers	1402195-7
Object Type	Rings
Place of Origin	England, Great Britain
Brief Description	Silver rings of unknown purpose, ca. 1790 (made). The subtle tooling on these pieces suggests they were useful for making covert measurements, and although several parts appear to be missing and mechanisms are stiff, some functionality is retained. Traces of gilding.
Primary Inscriptions	Unsigned and undated.
Provenance	Not ascertained.

[www.anastasiayoung.co.uk](http://www.anastasiayoung.co.uk)





Promoting the artform, supporting the makers, developing the audience in the UK and abroad

*with help from our corporate members:*





1 - 28 September

***The Brewhouse, Burton upon Trent***



7 - 31 October

***The Scottish Gallery, Edinburgh***



16 November - 12 December

***Plymouth College of Art***



THE SCOTTISH GALLERY  
CONTEMPORARY ART SINCE 1842

